



Cobham Hall

Guidance for Acceptable Dress in the Sixth Form

These examples are not exhaustive.

The Head of Upper School/Director of Boarding and Pastoral's decision is final.

Students must wear a matching 2 piece suit which must be appropriate for the school environment.

SKIRT LENGTH



Any length between A and B is acceptable.

A

B

SKIRT STYLES



mermaid



straight



pencil



tulip



a-line



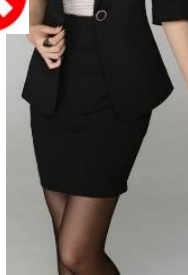
box pleated



Split too long



Too short



Too long



Too flared



Too figure hugging/body con



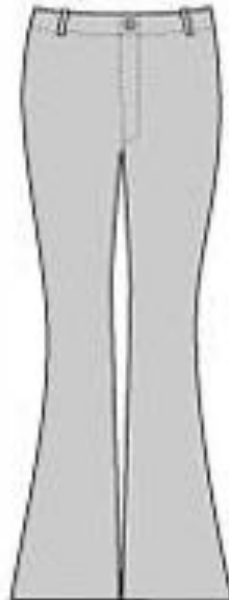
TROUSER LENGTH



No shorts. Trousers must be on or below the ankle bone.

Trousers should not be form-fitting.

TROUSER STYLE



Tapered, not skinny fit.



Straight leg fit



Slight boot cut/flare



Bottoms too flared



Legs too wide

SHOES



Suede Shoes



Flat Loafers



Leather Shoes (Black)



Leather Shoes (Brown)



Flat Lace Up Shoes



Flat Shoes



Suede Shoes



Loafers



Kitten Heel



High Heel



Brown Boots



Black Boots



Converse



Sandal



Trainers



Trainers



Boots



SHIRTS/BLOUSES

Shirts and blouses must be tucked in.



Shirt



Tie Neck



Cold Shoulder



Cropped top/not tucked in



Sleeveless



Short Sleeved



'Strappy' Top



Backless



Long Sleeved Shirt



Grandad Collar



Polo Neck



Deep v-neck/cleavage



Sleeveless Shirt



Frilly Collar



Hawaiian/patterned



Henley shirt



Short sleeve



Long sleeve



Open neck



Casual summer shirt



SCARVES AND TIES

Shawls are not to be worn. Outdoor scarves are not to be worn in the school buildings.

Scarves should be discrete. Ties do not have to be worn except on formal occasions.



JUMPERS

Must be fitted. No logos. No obvious patterns.



PE KIT

Only sports kit purchased from Perry may be worn.

Leggings/tracksuit bottoms must be Cobham Hall leggings/tracksuit bottoms (from Perry)

Hoodies/tracksuit tops must be Cobham Hall hoodies/tracksuit tops (from Perry)

Base layer top must be Cobham Hall base layer top (from Perry)

Drama